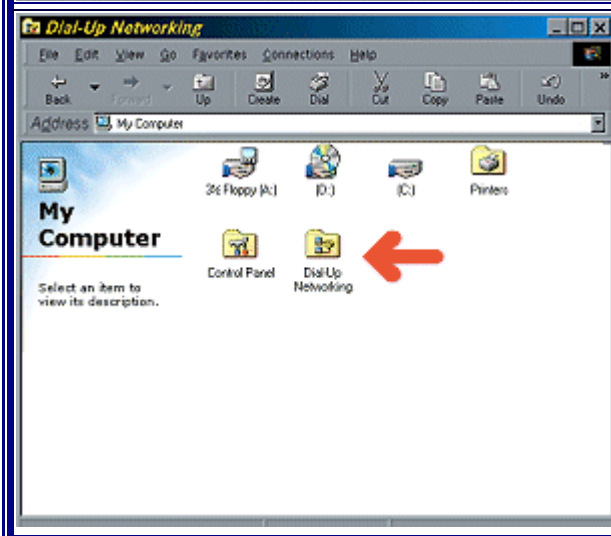


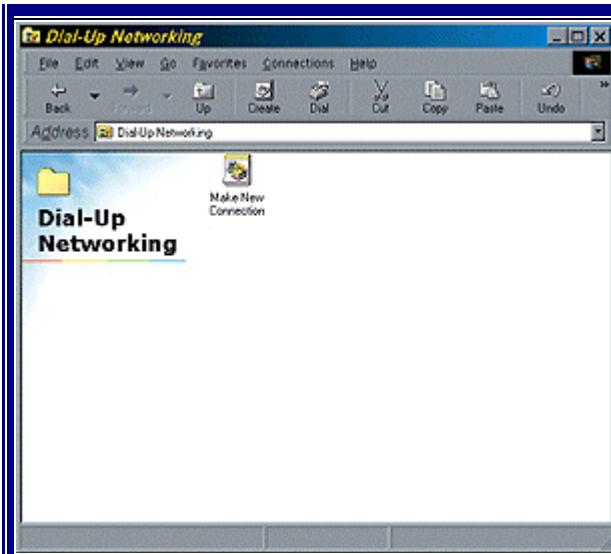
Step 1

Double click the *My Computer* icon located on your Main Desktop



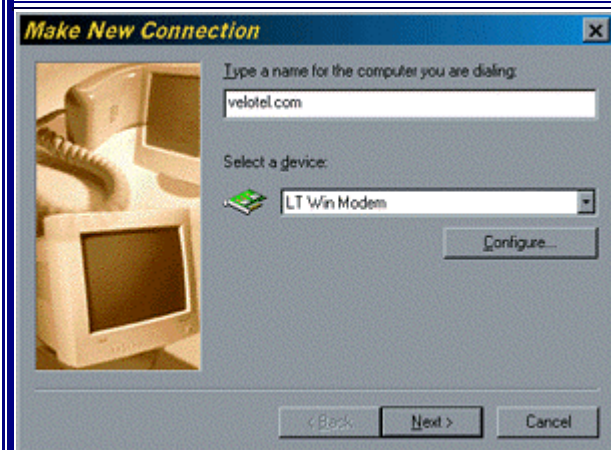
Step 2

Double click on the *Dial-up Networking* icon



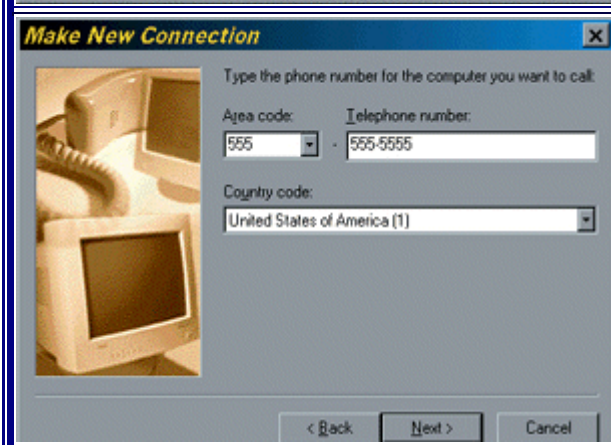
Step 3

Double click on the *Make a New Connection* icon



Step 4

Type *velotel.com* in the computer name field and then click on *next*



Step 5

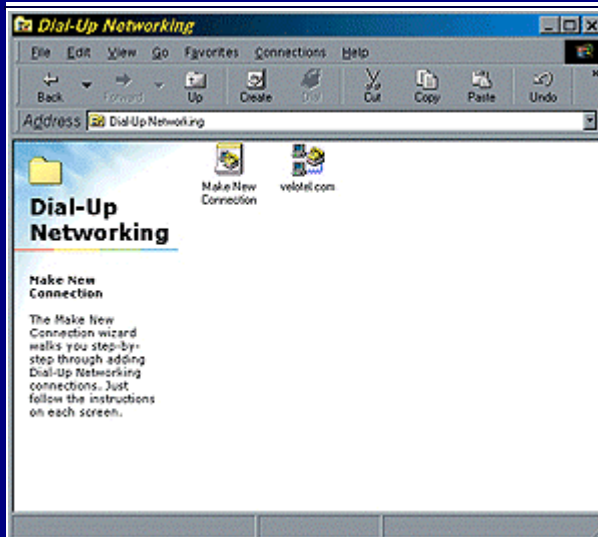
Type the *Area code* and *Telephone number* that were supplied by *velotel.com* and then click on *next*



Step 6

Congratulations!

Click on *Finish* and you will have completed setting up your new connection to velotel.com



Step 7

To start your connection follow steps 1 and 2 then double click on the *velotel.com* icon



Step 8

Your final step will be to enter your *User Name* and *Password* that were supplied by velotel.com.

After you type your username be sure to include *@velotel.com*.

Note both username and password are case sensitive.