

Step 1

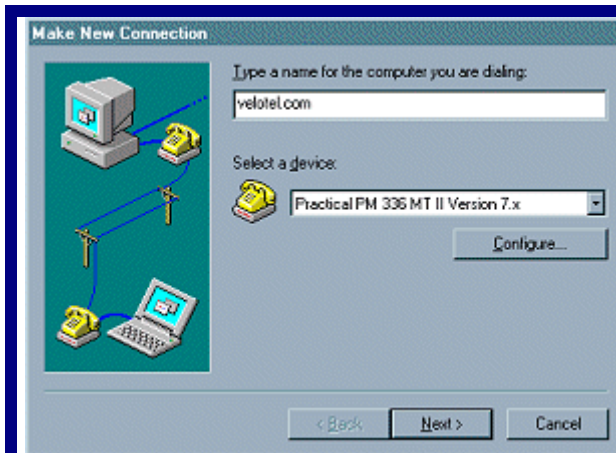
Double click the *My Computer* icon located on your Main Desktop

Step 2

Double click on the *Dial-up Networking* icon

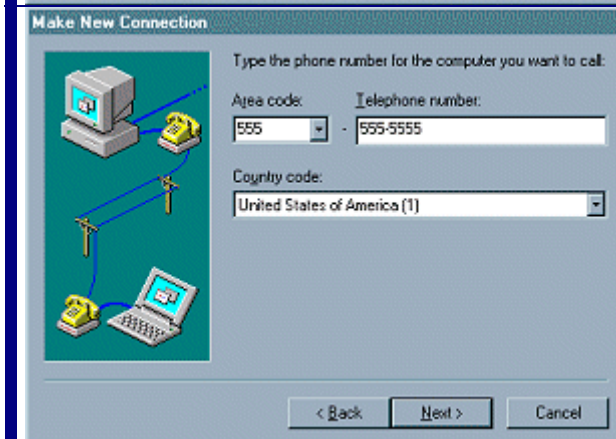
Step 3

Double click on the *Make a New Connection* icon



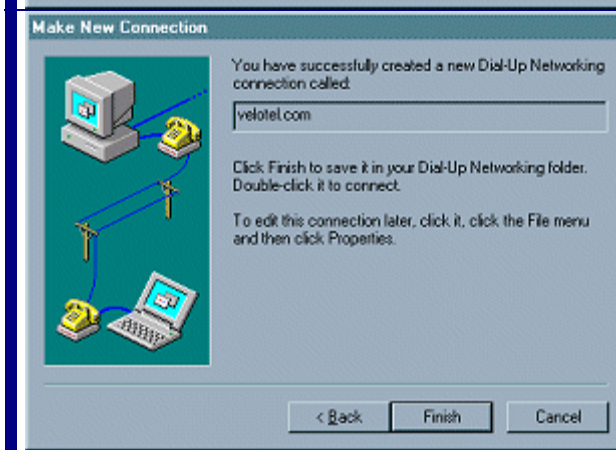
Step 4

Type *velotel.com* in the computer name field and then click on *next*



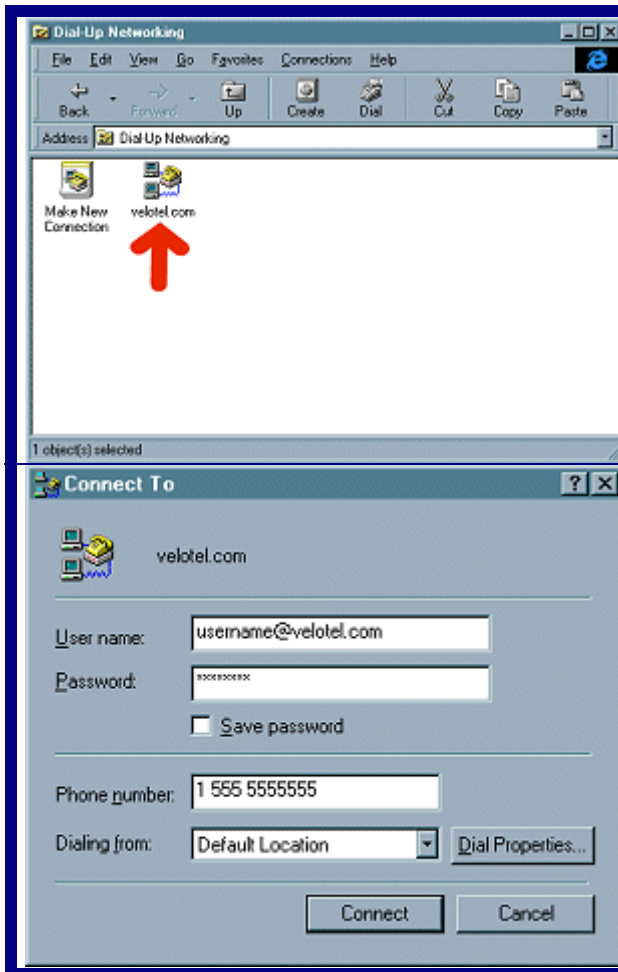
Step 5

Type the *Area code* and *Telephone number* that were supplied by *velotel.com* and then click on *next*



Step 6

Congratulations!
Click on *Finish* and you will have completed setting up your new connection to *velotel.com*



Step 7

To start your connection follow steps 1 and 2 then double click on the *velotel.com* icon

Step 8

Your final step will be to enter your *User Name* and *Password* that were supplied by velotel.com. After you type your username be sure to include *@velotel.com*.

Note both username and password are case sensitive.